

GUIDING FRAMEWORK

Regular Program Call for Proposals



2025

projets@fondationbeati.org

www.fondationbeati.org

Updated: October 2nd 2024

WELCOME

The purpose of this guiding framework is to provide you with all the information about the call for proposals in a transparent manner.

The goal is not to discourage you with an extensive document but to equip you with everything you need.

We hope it will be useful, and if you still have questions, feel free to write to us.



WHAT'S NEW!

The Foundation aims to support projects that profoundly transform existing structures and imagine inclusive and equitable futures. These initiatives seek to value diverse experiences and knowledge, particularly those of marginalized groups.

Additionally, our approach is based on collaboration and trust-based philanthropy. We are committed to minimizing bureaucracy and making the administrative process as streamlined as possible so that you can focus on implementing your projects.

We are therefore introducing a new version of our regular program:



A new process that is simpler, streamlined, and more inclusive, consisting of two steps, with plenty of tools available to support you as needed.



Two new themes to better target transformative projects.

Au menu



Funding and Support **4**

New themes **5**

New Process **11**

Project Selection **13**

Step 1: letter of intent **17**

Step 2: Full Application **19**

Support Measures **20**

The Artificial Intelligence Module **21**

Funding and Support



KEY ELEMENTS OF THIS FUNDING

- The selected projects will receive **\$30,000 per year for three years**, for a total grant of \$90,000 over three years.
- Starting this year, thanks to a revision of our contingency rate calculation, we will be able to select **8 new projects instead of 6**.
- The **funding is unrestricted**, meaning that groups and organizations are chosen based on the project presented; however, we trust them to determine how the funds should be spent to achieve the intended change.
- The criteria are **aligned with our values**; our exclusion criteria and equity goals are, for their part, **intentional and political**.
- The selection process is **democratic**: the selection committee is independent of the team and board of directors, with full decision-making power in choosing the projects.
- In addition to funding, **supported organizations** will have access, with no obligation, to support: tools, resources, coaching, and training.

New themes

The Foundation aims to support projects that profoundly transform existing structures and enable all of us to imagine inclusive and equitable futures. Projects and initiatives that value the diversity of experiences and knowledge, especially those from equity-seeking groups.

To ensure we support this type of project, we have refocused the call for proposals of our general program on two themes, which are more specific than in the past. Wherever possible, funds will be distributed equitably between the two themes. However, as this is the first year of implementing these priorities, we may need to maintain some flexibility.



Unconditional Solidarity

To fully commit to welcoming others, unconditionally.

To create safe and welcoming spaces where the rights and dignity of each individual are respected.

To change power structures and work methods to create truly inclusive and equitable spaces.



Emancipatory Futures

To support the emergence of new visions for the future, unique perspectives that incorporate the often-overlooked viewpoints of our history.

To foster collective innovation and creativity for a more just and equitable society through the exploration of alternative futures.

To critique the present while imagining and collaboratively building a profoundly transformed future.



UNCONDITIONAL SOLIDARITY

What do we mean?

Unconditional solidarity represents a deep commitment to welcoming others without conditions. By transforming power structures and ways of operating, it is possible to create truly inclusive and equitable spaces. In a practice of unconditional solidarity, we can create safe and welcoming spaces that respect the rights and dignity of each person and foster respectful and empowering exchanges.

The Foundation therefore seeks to support organizations and collectives in Quebec that are concretely building these “radical hospitalities” or reflecting on ways to do so more deeply. Whether through projects that promote dialogue, exchange, mediation, or initiatives for cultural and political transformation, the goal is to help shape a more hospitable and inclusive world.

What might that look like?

- **Direct solidarity actions:** For example, safe shelters for people experiencing homelessness with no access restrictions, community meals with no conditions on resources or status, safe meeting spaces to foster inclusion and solidarity, or women’s shelters open to all women without exception.
- **Actions aimed at transforming structures and policies:** For example, supporting organizations advocating for inclusive and anti-discriminatory policies, or defending the rights of marginalized individuals; projects focused on transforming institutions to make them more welcoming and respectful of diversity.
- **Actions aimed at cultural transformation:** For example, educational programs and awareness campaigns to promote a culture of inclusion and respect, or initiatives that seek to address harms done to marginalized communities and promote reconciliation.

Does "unconditional" mean that the Béati Foundation supports all types of initiatives?

The idea of unconditional solidarity, even when viewed very broadly, is rooted within the framework of our core values. We do not support groups or activities that are anti-choice, that do not recognize trans and non-binary identities, that are conspiracy-oriented, masculinist, climate-skeptical, or any groups that deny intersectionality, systemic racism, and various forms of oppression. See also: our exclusion criteria.

What makes solidarity truly... unconditional?



Respect and Dignity: Treat each person with respect and dignity, regardless of their background, status, or beliefs. Recognize and value the diversity of knowledge, experiences, and cultures.



Safety: Provide an environment where people feel physically, psychologically, and emotionally safe. Ensure protection against all forms of violence, discrimination, or harassment.



Listening and Empathy: Listen to people's needs and concerns without judgment, with genuine empathy. Show understanding and compassion for the experiences of others.



Non-Judgment: Welcome individuals without expecting them to conform to norms or change their behavior. Accept people as they are, unconditionally.



Accessibility: Ensure that services and spaces are accessible to everyone, including people with disabilities. Remove physical, social, and economic barriers that might hinder access.



Participation: Involve those being welcomed in the decisions that affect them, valuing their voices and perspectives. Encourage active participation and individual autonomy in the welcoming process.



Inclusion and Non-Discrimination: Ensure that all welcoming actions adhere to the principles of inclusion and non-discrimination. Promote an environment where all people, regardless of their background, gender, sexual orientation, socioeconomic status, or other factors, feel welcomed and valued.



Exploring Further...

Other examples

- **Safe and Inclusive Spaces:** Creating environments where everyone feels safe and respected.
- **Respectful Exchange of Knowledge and Cultures:** Promoting the exchange and appreciation of diverse knowledge and cultures.
- **Strengthening Community Solidarity:** Initiatives aimed at reinforcing solidarity within communities, especially those seeking equity.



Historical and Theoretical Foundations

Jacques Derrida and Emmanuel Levinas are among the philosophers who have most influenced the concept of radical hospitality. Derrida distinguishes between conditional hospitality, which is subject to rules, and unconditional hospitality, which is without restriction, where the host must welcome the other unconditionally, even if this welcome may disrupt the established order. Levinas, on the other hand, views hospitality as an ethic of responsibility toward the other, where alterity is embraced as an expression of our shared humanity.

Radical hospitality is also central to many social justice movements that seek to dismantle systems of oppression and discrimination. This concept is present in various religious traditions, from Christianity to Islam, where the generous welcome of guests and support for those in need are highly valued. Certain local initiatives and community practices, such as those deployed in shelters for people experiencing homelessness and food cooperatives, embody this principle by offering resources and unconditional support to those rendered vulnerable by our oppressive systems.



EMANCIPATORY FUTURES

What do we mean?

In this theme, we aim to encourage visions and practices that challenge current power structures and offer viable alternatives to systems of oppression. In short, in a world of persistent inequalities, we seek to support the creation of new imaginaries for the future.

For us, "liberatory futures" represent new perspectives, particularly those that incorporate historically overlooked viewpoints. These are projects that stimulate collective innovation and creative thinking. They are pathways toward a more just and equitable society through the exploration of alternative futures, fostering the emergence of innovative solutions to contemporary challenges. They provide tools to critique the present and tools to dream and co-create a profoundly different future.

What perspectives are we talking about?

Here is a list of possible perspectives—feel free to add your own:

- **Indigenous perspectives** that emphasize cultural transmission, sovereignty, symbiosis with nature, and community resilience to envision inclusive and sustainable futures.
- **Decolonial perspectives** that support visions of the future rooted in the epistemologies of the Global South, rethinking frameworks imposed by Western modernity and promoting pluriversal imaginaries.
- **Anti-capitalist perspectives** that offer visions of a future where structures of economic domination are abolished, promoting economic justice and true democracy.
- **Afrofuturist perspectives** that reimagine the Afro-descendant experience through science fiction, technology, and African history, blending African traditions with futurism to envision alternative and liberatory futures.
- **Regional perspectives** that encourage local communities to envision sustainable and equitable futures, valuing local knowledge, regional culture, and community resilience.

- **Anti-fascist perspectives** that envision futures where authoritarian structures are abolished, fostering societies based on social justice and freedom for all.
- **Crip perspectives** that explore possible futures by incorporating the viewpoints of people with disabilities, highlighting their experiences and imagination to create alternative and inclusive visions of the future.
- **Feminist perspectives** that support futures where women's rights are fully realized, including visions of gender equality, an end to gender-based violence, and the promotion of women's leadership.
- **Political ecology perspectives** that envision futures where human-nature relationships are transformed, addressing the ecological crisis and advocating for environmental justice.
- **Intersectional perspectives** that encourage futures where oppressions related to race, gender, class, and sexuality are abolished, allowing everyone to live freely and equitably.

What might this look like in terms of projects?

Workshops and Collective Reflection Labs:

Collaborative workshops for co-creating future imaginaries, social innovation labs, and spaces for reflection and experimentation on concrete projects.

Artistic and Cultural Initiatives:

Projects for creating speculative fiction, futurist art festivals, and events celebrating arts and future imaginaries.

Concrete Experiments:

Pilot projects for autonomous communities experimenting with sustainable ways of living.

Educational and Community Programs to Raise Awareness of Alternative Futures:

Community storytelling initiatives, where the community shares its visions for the future.

Collaborative and Participatory Platforms:

Digital platforms for future imaginaries, to share and co-create, and projects for mapping alternative futures.

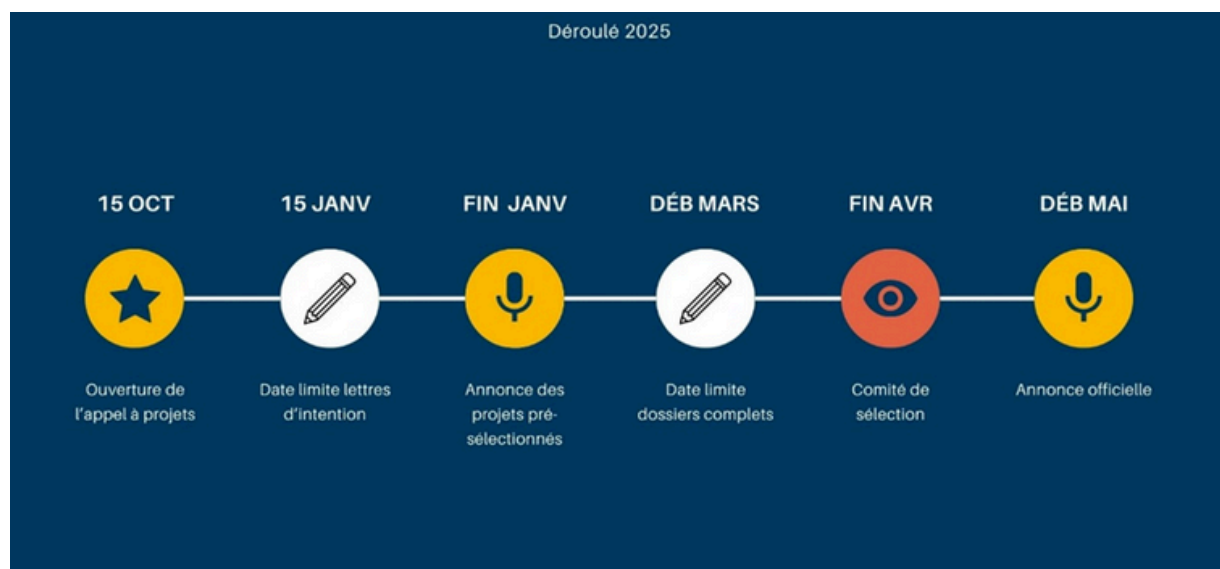
Community and Activist Research:

Participatory and community-based research, studies exploring local alternative futures, and action research with activist groups imagining future practices.

NEW PROCESS

We have revised the criteria and processes guiding project evaluation. In this section, you will find the main guidelines, our exclusion criteria (what we do not fund), our equity targets (what we prioritize), our evaluation criteria (how we select projects), and finally, the evaluation process (who makes the decisions).

The Process in Key Dates



We're here for you!



Above all, we seek to encourage your projects and to fund those that align most closely with our core objectives, even though we wish we could support more. With this approach in mind, we have offered you several support measures throughout the process, summarized in the dedicated section.

2 Simple Steps

1

Letter of Intent:
due by January 15

2

For selected projects:
full application due by the end of February.

Who Can Apply?

Projects submitted to the Foundation must take place in Quebec and come from nonprofit organizations or collectives, whether or not they have charitable status. *There is no longer a waiting period, so you may apply even if you received a positive or negative response last year.*

What Can Be Submitted?

The Foundation has chosen to adopt the principles of trust-based philanthropy, which means we provide “unrestricted” funding. This allows groups to decide where the funds will be most useful: for the project, salaries, research, or other needs.

PROJECT SELECTION

Does “unrestricted” mean that we fund everything?

Not quite: here are our exclusion criteria, selection criteria, and equity targets.

Exclusion Criteria

We have adopted clear and politically grounded exclusion criteria that align with our values and ethics, and these apply to all the Foundation’s grants.

Origins of the Request:

Requests from academic research or other philanthropic foundations are excluded.

Excluded Groups:

We do not support groups or activities that are anti-choice, do not recognize trans and non-binary identities, are conspiracy-oriented, masculinist, climate-skeptical, or any group that denies intersectionality, systemic racism, and various forms of oppression.

Excluded Objectives and Projects:

Projects intended to replace recurring funding, general fundraising campaigns, real estate construction, debts or previously completed activities, scholarships, internships, religious or partisan political activities, and projects outside Quebec.

Who Selects the Projects?

For the first step, the letter of intent, the Foundation’s team conducts the pre-selection process, removing ineligible projects and then retaining the most promising ones based on the selection criteria.

The second step, the decisive phase for selecting funded projects, is carried out independently by the selection committee.

The Selection Committee

The selection committee is entirely independent and consists of eight (8) members who play a central and decisive role in the annual project funding process. The members of this committee are the only ones with voting rights on the selection day.

This committee brings together a wide range of skills and experiences. It includes individuals from diverse backgrounds, such as experts in social and political issues, community leaders, and professionals with extensive experience with the realities faced by invisible or marginalized populations and communities. This diverse composition ensures a balanced and inclusive approach to selecting projects for support, in alignment with the Foundation's values of justice, equity, and inclusion.



Equity Targets

To go even further, we have adopted equity targets. This helps us overcome unconscious biases that may influence the distribution of funds and ensures a more equitable and objective approach. We are therefore committed to reaching these equity targets across all of our regular grants:

Targets for Underfunded Groups:

Allocate a minimum of 50% of funds to initiatives led by and for Indigenous, Black, and racialized people, LGBTQ2EAI+ communities, religious minorities, people with disabilities or functional limitations, and individuals with cognitive atypicalities.

Regional Targets for Rural Areas:

Allocate a minimum of 50% of funds to initiatives located outside major urban centers.



Selection Criteria

Les critères suivants, utilisés par le comité de sélection, permettent d'évaluer les initiatives soumises. Les critères relatifs à l'approche, aux thématiques, à l'enracinement communautaire et à la pertinence sociale ont un poids plus important lors des délibérations.

Innovation:

- The initiative introduces original and innovative perspectives, proposing new solutions to existing challenges.
- It renews practices within the field by incorporating creative, inclusive, and transformative approaches.
- Innovation may not always mean something entirely new, but rather something novel relative to what is typically practiced in mainstream institutions or supported by dominant thinking.
- For liberatory futures initiatives, they should explore alternative future imaginaries, rethinking current structures to offer more just and equitable visions.

Approach:

- The initiative promotes the empowerment of individuals, groups, or communities, allowing them to reclaim control over their circumstances.
- It emphasizes the development of collective and participatory solutions, actively involving beneficiaries in decision-making and implementation processes.
- It focuses on the concerns and needs of marginalized or excluded individuals.

Specifically Regarding Unconditional Solidarity:

- *The initiative embodies a complete openness to others, without expecting reciprocity.*
- *It aims to transform power structures to create truly inclusive and equitable spaces.*
- *It creates environments where each person feels physically and emotionally safe, respected, and valued.*

Community Roots:

- The initiative originates from the community and is led by local organizations.
- It demonstrates a strong commitment to local populations and community partners, fostering a collaborative and solidarity-based approach.
- It addresses the specific needs of the local community and mobilizes local resources and knowledge.

Operational Capacity:

- There is a clear alignment between the stated objectives, available resources, and the project timeline.
- The organization has demonstrated the capacity to implement and manage the initiative effectively, with sound governance and appropriate skills (or strategies to acquire them).

Relevance and Social Impact:

- The initiative represents a relevant and innovative response to contemporary challenges.
- It has the potential to bring about significant and lasting social transformation, contributing to social justice and inclusion.
- It has the potential for wider influence and can inspire similar initiatives.

Sustainability and Resilience:

- The initiative has the potential to sustain and develop in the long term, beyond initial funding.
- It strengthens the resilience of communities, preparing them to face future challenges and adapt to change.
- For liberatory futures initiatives, they should demonstrate how they promote the emergence of sustainable and equitable alternative futures by mobilizing community knowledge and resources.

Financial Management:

- The initiative presents a balanced and transparent operating budget or financial statements, with realistic prospects for financial viability.
- The organization demonstrates transparency and accountability in its management of funds.

STEP 1 THE LETTER OF INTENT

Written or Filmed

For the first step, complete the form on the Béati Foundation website by Wednesday, January 15, at 11:59 p.m., including:

- Your contact information
- Socio-demographic information
- The letter of intent, written or filmed



**A letter of
up to 3 pages**



**A video of
up to 3 minutes**

Tips for the Letter of Intent

(written or filmed)

Here is an example of potential content for the Letter of Intent:

Project Overview

- A clear and descriptive title.
- Indicate whether your project aligns with Unconditional Solidarity or Liberatory Futures.
- A brief description (150–200 words) of the project, its objectives, and planned actions.

Who Leads the Project

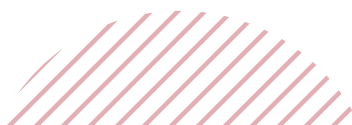
- A description of your organization, including its mission, history, and main areas of focus.
- Detail your organization's experience and expertise related to the chosen theme.
- Explain how the project is led by and for the individuals involved. Indicate the composition of your team, highlighting the representativeness of the targeted communities.

Detailed Project Description

- The specific objectives of the project and how they address the priorities of the chosen theme.
- Describe the main activities planned to achieve these objectives.
- Indicate the methods and approaches you will use to implement the project.

Target Populations and Impact

- Describe the populations targeted by your project, including information on their current situation and how they will benefit from the project.
- Explain the expected impacts of the project, both in the short and long term.



STEP 1 THE LETTER OF INTENT

Written or Filmed

Partners and Local Grounding

- List some of the partners involved in the project, specifying their roles and contributions.
- Detail how your project is rooted in the local context and how it addresses the specific needs of the community.

Target Populations and Impact

- Describe the populations targeted by your project, including information on their current situation and how they will benefit from the project.
- Explain the expected impacts of the project, both in the short and long term.

Partners and Local Grounding

- List some of the partners involved in the project, specifying their roles and contributions.
- Detail how your project is rooted in the local context and how it addresses the specific needs of the community.

Organizational Capacity

- Present key information about the human and financial resources of your organization. Ensure that you demonstrate your organization's capacity to carry out the proposed initiative.
- Describe the governance structure of your organization and your management practices.

Conclusion

- Reiterate the key points of your letter of intent and the importance of your project to the chosen theme.



If You Choose a Video:

- Your video should include the same elements as the letter of intent.
- It should be accessible via a link (and should not require downloading).
- It may have a password if you prefer.

STEP 2 FULL APPLICATION

All groups that have submitted an application will receive a response, positive or negative, by late January / early February 2025.

If you are shortlisted to proceed in the selection process:

1. You will receive the full application to complete and submit by March 3, 2025.
2. We will schedule a virtual visit together to supplement the written application.

Documents to Attach (If they are not already available online)

- Board resolution or delegation of authority that holds legal responsibility for the management of any funds received from the Béati Foundation (see the sample resolution provided on the website).
- List of your board members (name, title).
- Balance sheet or activity report.
- Latest financial statements of the organization or budget, depending on what is available.

Questions That Will Be Asked

- More in-depth presentation of your organization, including your organizational structure (governance, organizational model, associative life).
- On project design: the context, desired impacts, and envisioned processes.
- On project implementation: your objectives, action plan, and how the individuals involved will be engaged.
- Around the project: your local roots, collaborations related to the project, and other potential funding sources.

The Follow-Up Visit

The application process concludes with a virtual visit, which will take place in March. This allows us to meet, get to know each other better, and address any questions that remain after reviewing the full application. Because even though technology can assist in writing the application, it is the human element that is at the heart of it and truly matters!

TO HELP YOU

At All Times

- 1 You can reach us at projects@fondationbeati.org
- 2 Consult the guiding framework; all the information is there.
- 3 Stay connected on our social media; we will publish the most frequently asked questions... and their answers there.


For Step 1, the Letter of Intent

- 4 You can schedule a 15-minute mini-meeting to specifically discuss your project: **Schedule a 15-minute appointment**
- 5 You can use the artificial intelligence module specifically designed to help you formulate the letter of intent for this call for projects. (*available at the end of October*)
- 6 You can write in the language of your choice: the artificial intelligence module will translate it into French, our working language.
- 7 You can present a video version of your letter of intent instead of a written letter.

For Step 2, the Complete Application

- 8 You can already know what will be required for the submission of the final application. No surprises!
- 9 You will be able to schedule a 60-minute meeting to help you prepare your application if needed.
- 10 After submission, you will still have the opportunity to clarify your project during the virtual visit.

THE ARTIFICIAL INTELLIGENCE MODULE




Available
Around the end
of October

What for?

Artificial intelligence allows you to spend less time on funding applications and more time on the projects and people you serve: we love that! Moreover, you can request to do this in the language of your choice, the one you are most comfortable with, and we will receive it in French.

There is no obligation to use it; it's simply an additional tool we provide for you. It's all about balance: we offer technological tools, while also providing opportunities to meet and exchange, human to human.

How does it work ?



The module (or chatbot) is programmed with our questions and criteria, using a simple and straightforward tone that gets to the point. You answer the questions, and the AI provides you with a draft letter. You can revise it, and when it's ready, you save it in a standard document.

To make the letter more "your own," you can share a document that reflects your style, one that you are particularly proud of. The AI will adapt your letter accordingly.

In the end, when you are ready, you fill out the (very short) letter of intent form and attach the letter. That's it!



- For going through the process and submitting an application
- For your time
- For your interest



- For everything you do for the communities
- For your commitment!



- Meeting at the **end of January** for the results of Step 1
- Meeting at the **beginning of May** for the final selection!



@ Projets@fondationbeati.org

 www.facebook.com/fondationbeati/

 www.instagram.com/fondation_beati

 www.linkedin.com/company/fondationbeati/